



# Brambly Hedge

Brambly Hedge Holiday Lets  
Milton Of Culloden,  
Inverness,  
Inverness-Shire  
IV2 7NU

Tel: +44 (0) 1463 861712  
Email: [julie@bramblyhedge.co.uk](mailto:julie@bramblyhedge.co.uk)

This is a stunning house in a stunning location and just a couple of miles from Castle Stuart Golf Links. In fact with wellington boots you could amble along the shore to the course!

Designed to individual specifications and with an abundance of space this property will offer the larger group of people comfort and peace.

The shores of the Moray Firth are just on the opposite side of the quiet road and there are lovely views across to the surrounding hills and the Kessock Bridge.

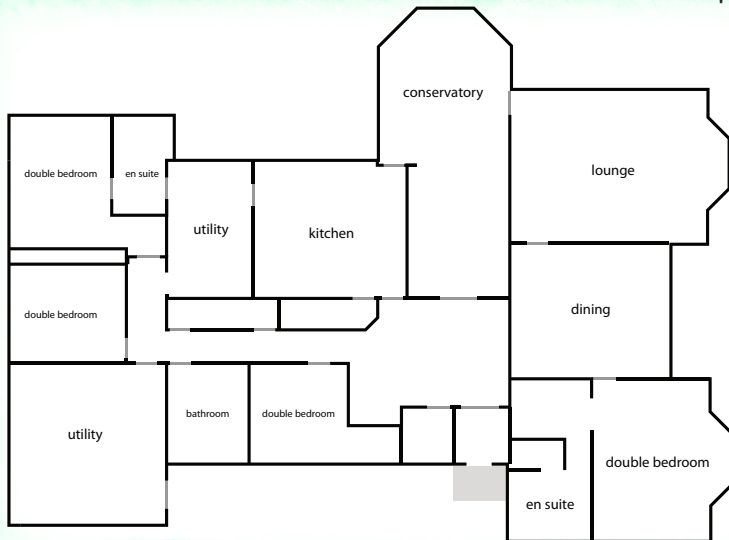


# The House



The house itself is situated just off the quiet country road, in Milton of Culloden, a charming village on the banks of Moray Firth. The small village is within reach of the City of Inverness, with a great selection of restaurants, pubs and visitor attractions.

Inside the house, there are five double bedrooms, three of which are en suite, all furnished to offer comfort and a touch of luxury. On the ground floor you will also find a spacious kitchen with plenty of room to cook a fantastic meal or entertain. Just next door to this there is a large dining room, which is regally furnished to provide an extra special dining experience.



On the left of the dining room is an exceptionally spacious living area, complete with three large sofa's, a television and open fire. This provides warmth and comfort, perfect for relaxing after a long day on the golf course or ambling through the fantastic countryside the Highlands has to offer.

The floor plan on the left shows the downstairs area only, with the additional bedrooms in the same style located upstairs.



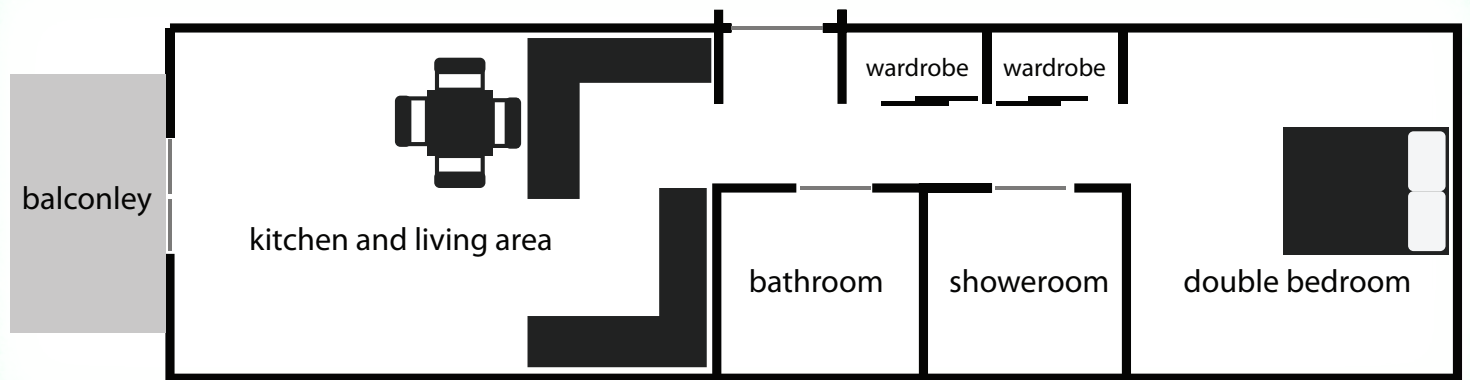
# The Flat



We also offer the option of a smaller property, which is perfect for two. This fabulous flat would be ideal for a romantic weekend escape to the Highlands, or perhaps a weeks golfing expedition to explore the best Scottish golf has to offer.

There is a beautiful double bedroom, spacious in size with stunning views of the Scottish countryside. The property also has two bathrooms, one of which has a lovely roll top bath ideal for soaking away those aches and pains after a day on the course.

At the other end of the flat is a spacious open plan living, kitchen dining area, which opens out to a balcony providing great views of the Moray Firth.



# Finding Us...



Approaching from Inverness, Brambly Hedge is east of the City only 2 miles along the A96 towards Nairn and Aberdeen.

Turn left under the Railway Bridge for Milton Of Culloden, as sign posted, once over the second roundabout past the large Tesco. Following the road round to the right, Brambly Hedge is the first property on the right.

Brambly Hedge Holiday Lets  
Milton Of Culloden,  
Inverness,  
Inverness-Shire  
IV2 7NU

